



## Park Lane Plaza, 2 Jamaica Street, Liverpool, L1 0AF

**£1,100 PCM**

Berkeley Shaw are pleased to offer TO LET this First Floor TWO BEDROOM FURNISHED apartment located within the Park Lane Plaza development. Apartment briefly comprises; hallway, open plan living and kitchen area with appliances included, private balcony, two double bedrooms, bathroom. Benefits include balcony, lifts to all floors and communal permit parking.

Viewing Highly Recommended.

Deposit : £1100  
Minimum Term: 12 Months  
Council Tax: Band B





## Hallway

Entrance door, Carpet, Electric heater, walk in storage room with water cylinder, 2 door wardrobe chest of drawers

## Open Plan Lounge Kitchen

Double glazed windows, double glazed door to balcony, carpet, electric wall heaters, tiled floor in kitchen area, kitchen comprises of a range of fitted base and wall units integrated under counter fridge with icebox, oven, hob, extractor hood, washer dryer, dishwasher, furnishings include: 1 x 2 seater and 1 x 3 seater couch, coffee table, tv stand, dining table and chairs

## Bedroom 1

Double glazed windows, carpet, electric wall heater, furnishings include 1 x King size bed and mattress, 2 x chest of drawers, 1 x 3 door wardrobe, 1 x bedside cabinet

## Bedroom 2

Double glazed windows, carpet, electric wall heater, furnishings include 1 x Queen size bed and mattress,

## Bathroom

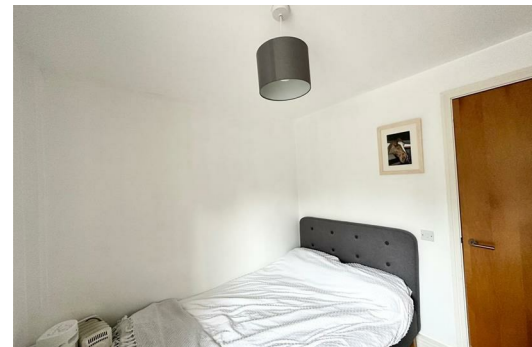
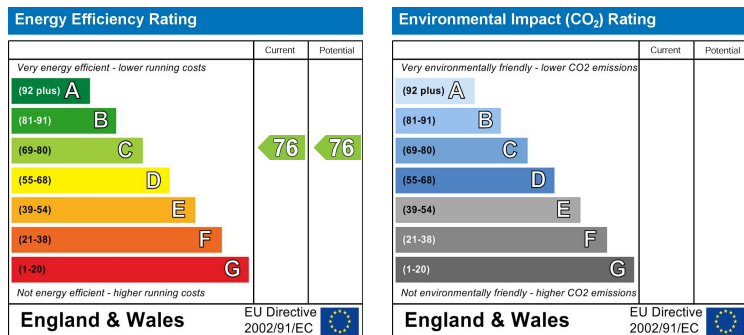
Part tiled walls and flooring, bath with shower over and screen, low level w.c. sink, ladder towel heater

## Balcony

Located off the lounge,, wooden decked floor

## Communal Permit parking

communal parking (permitted)



Berkeley Shaw Estate Agents Limited.  
Company No. 0784754

Berkeley Shaw Real Estate Limited.  
Company No. 05206927

